

A photograph of a field of tall, dry, golden-brown grasses. The grasses are dense and reach upwards, some leaning slightly. The background is a clear, light blue sky. The overall tone is warm and somewhat somber.

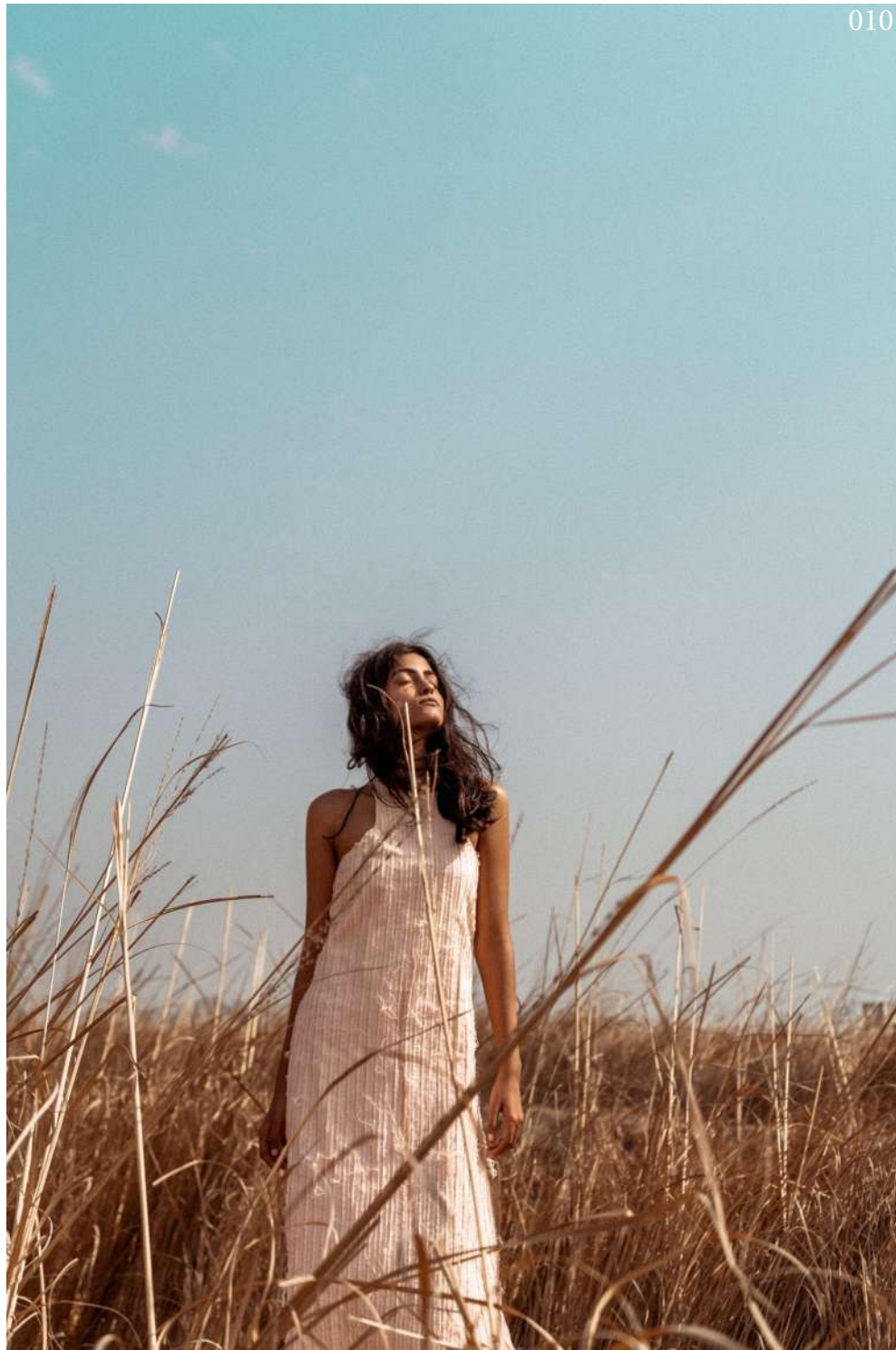
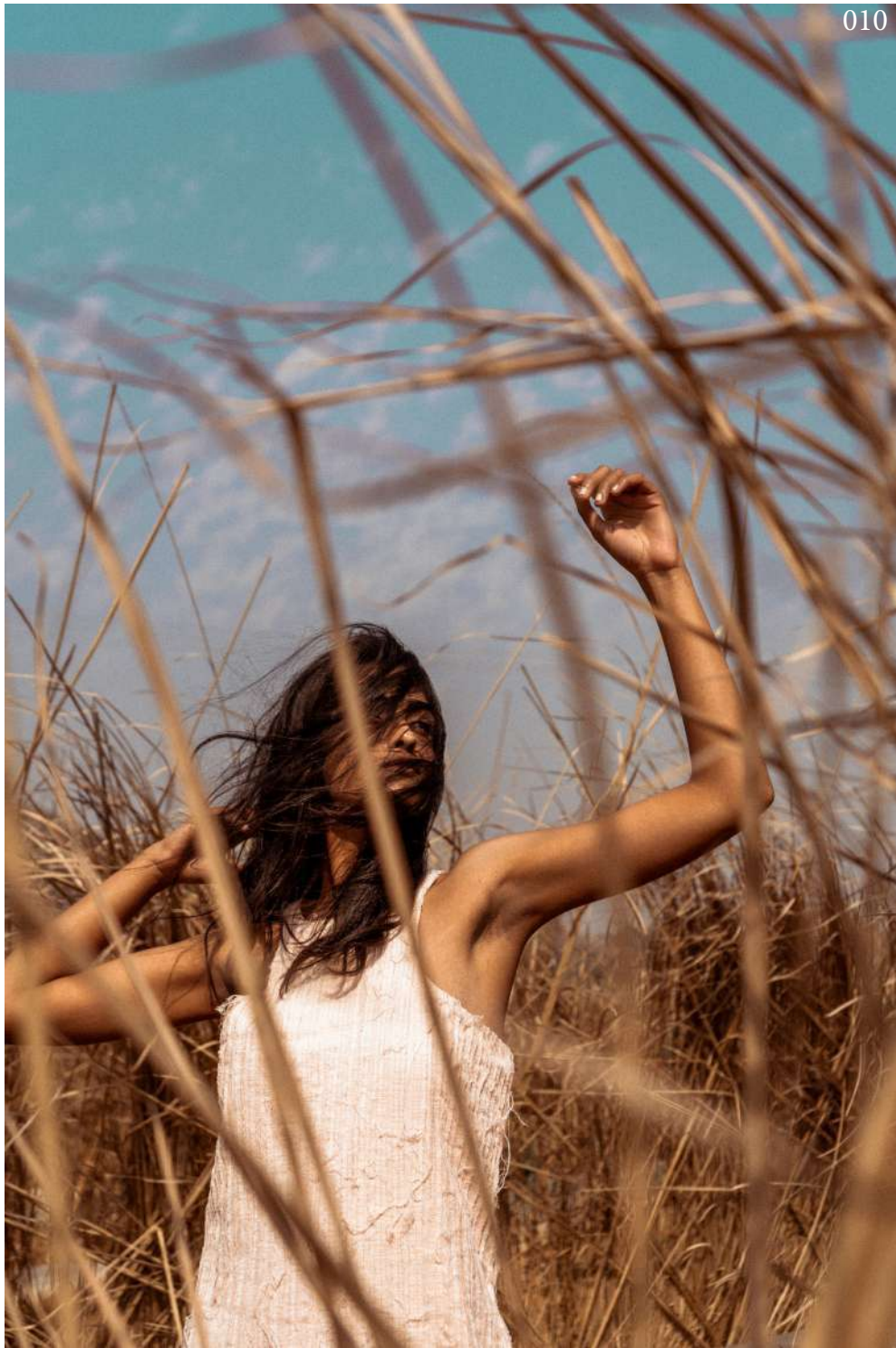
BROKEN BROOK



The radiant sun bathing the whole world in a warm glow, blue sky stretched towards the horizon, meeting with the golden hue of the wheat, the gentle breeze soothing the blossoming flora with the sweet promise of the warmth to come; she stands there with her tousled hair, and hears in each little brook a new melody, with a thrill of joy for all the choices to come, each one of them laden with discoveries.

Inspired by the Japanese ideology of wabi-sabi, referring to that which is imperfect, impermanent, aged, humble and authentic. An aesthetic that embraces the value of passing of time, the seasoning of time and the elements, the handmade and the simple. Wabi-sabi is a way of being open to emotion and acceptance, a state of mind and a state of feeling.

Embodying the philosophy of wabi sabi in the design process, it is visible in the finished designs through the subtle hues, natural materials; evident through the frayed edges and the visible stitching and asymmetry. Broken Brook use handloom khadi, gold zari, cotton crochet and hand detailing to give the garments more meaning; that exudes wholeness and share a story. A selection of well thought through pieces, consciously sourced and tactile textures, challenging the traditional perception of beauty and celebrating the unique and imperfect.

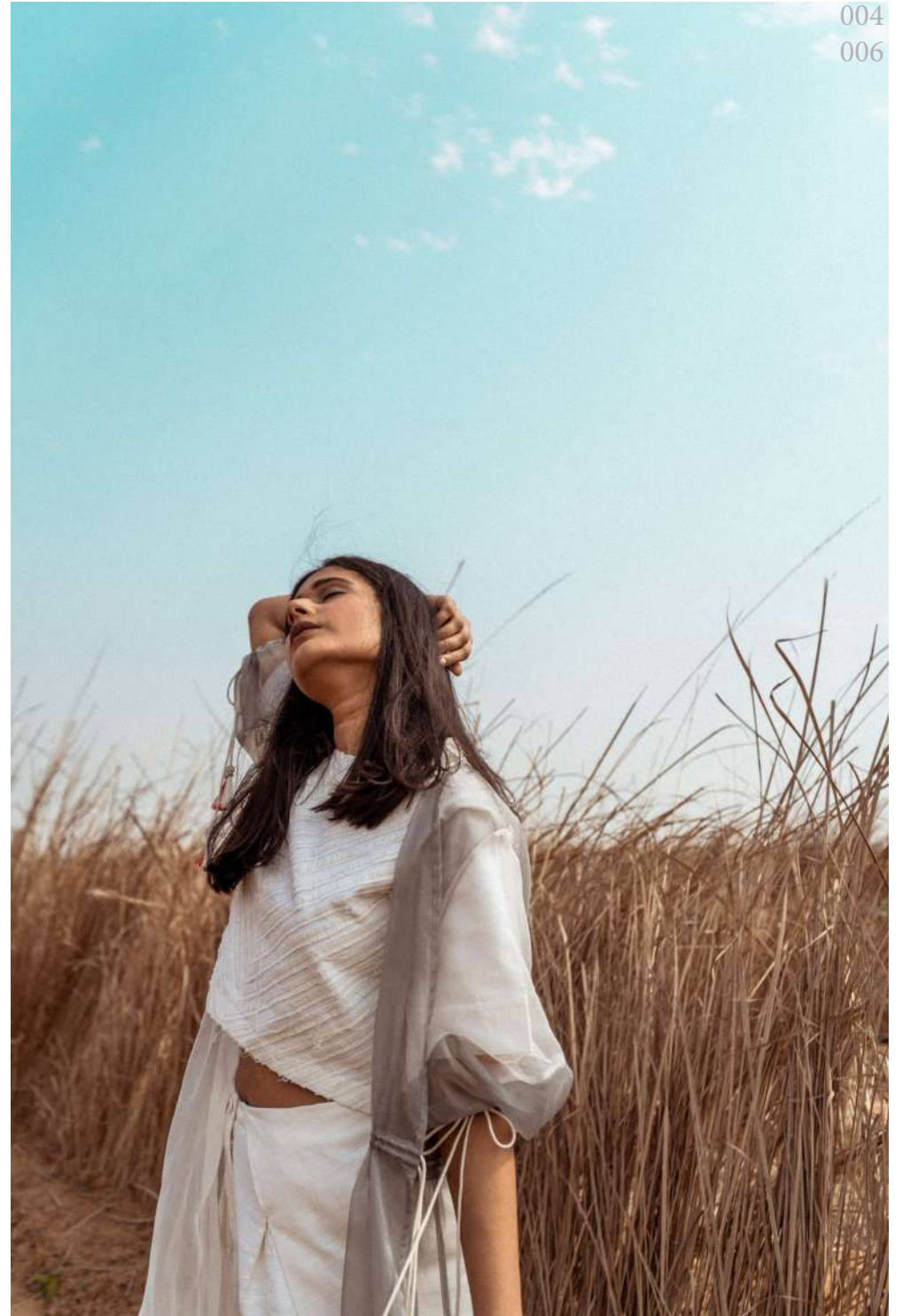


025



AHM/BB/025

004
006



AHM/BB/004



019
013



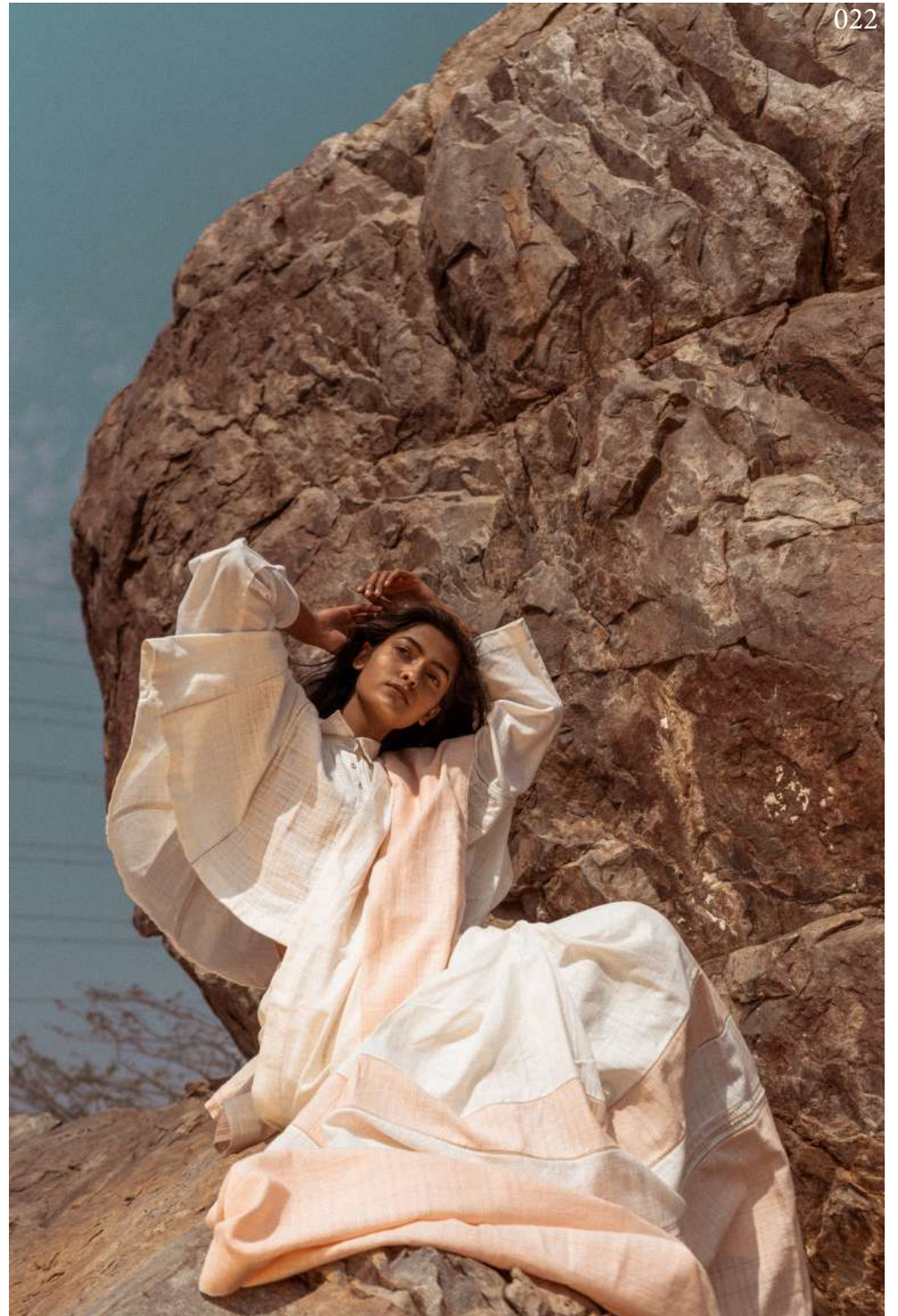
AHM/BB/019

AHM/BB/013

015



AHM/BB/015









004



AHM/BB/004

011



AHM/BB/011



001



AHM/BB/001

001

011



AHM/BB/001

AHM/BB/011



018



AHM/BB/018

009



AHM/BB/009

002



AHM/BB/002

018



AHM/BB/013

002



AHM/BB/002

012



AHM/BB/012



016



016



AHM/BB/016

